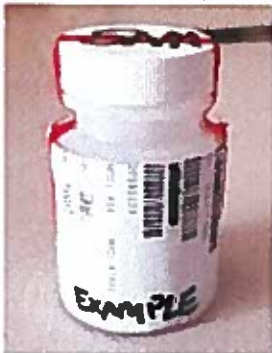
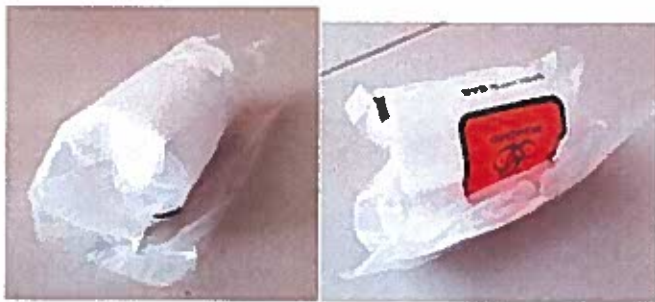


18 BASIC STEPS IN URINALYSIS COLLECTION PROCESS

1. **UPC Confirms Identify of Marine by Checking CAC ID to Testing Register**
2. **Marine Selects, Inspects, & Verbally Accepts the Bottle**
3. **UPC Ensures CAC ID is in the Space Reserved for the Selected Bottle**
4. **Observer Escorts Marine to the Head**
5. **Observer Witnesses a Minimum of 30 MLS of Urine from the Marine Enter the Specimen Bottle**
 - a. **Females Only – Observer will Witness an Unadulterated Transfer of Urine from the Wide Bottle to Specimen Bottle**
6. **Marine Washes Hands & Dries Hands Thoroughly with a Paper Towel**
7. **Observer Escorts Marine to Urinalysis Table**
8. **Marine Places Bottle on the Urinalysis Table & "Affirms" to the UPC that it is their Urine**
9. **UPC Confirms that the Observer "Observed the Fluid Leaving the Body" with the Marine Still Present**
10. **Observer Certifies Marine Provided Specimen on the Urinalysis Roster by Printing & Signing their Name in the Observer Block**
11. **Marine Validates Specimen by:**
 - a. **Verifying their EDIPI by Initialing the Label**
 - b. **Signing the Testing Register Underneath their Printed Name & EDIPI**
12. **UPC Initials Label**
13. **Secondary Reviewer Checks the Specimen Bottle with Gloved Hands for Dilution, Substitution, & Adulteration & Ensures the Bottle is Dry by Wiping the Bottle with a Paper Towel, does not Leak & the Lid is Secure**
14. **Marine Attached Initialed Label to the Specimen Bottle**
15. **Marine Attaches Red Tamper Resistant Tape from the "Tape Here" Label, Flush with the Bottle Neck, & across the Cap till the Tape Touches the Label on Both Sides**



16. **Marine Initials Tape on Top of the Cap in Block Letters**
17. **Marine Inserts Specimen Bottle into a Secondary Leak Proof Biohazard Bag, Ensures all Air is out of the Bag by Rolling the Bag, & Seals it.**



18. **UPC Ensures the Marine places the Specimen into the Slot where their CAC ID is Retained & the Marine is in Positive Possession of their CAC ID**